



Loving music

THE HEART OF MUSIC

Limited
[EDITION]

Contents

Prolog	04 – 05
Reference Jubilee	08 – 11
Master Jubilee	12 – 15
Al Di Meola	16 – 19
Diamond Jubilee	22 – 23
Technical Specifications	26 – 27
Imprint	29

no LIMITS

For over 45 years, we at Clearaudio have shared a passion for music and the vinyl community. Our Limited Edition products are not only investments in superior sound quality but also in timeless value. They are made for generations and offer music lovers worldwide an emotional, vibrant experience.

To celebrate our anniversary, we present exclusive turntables that showcase our long-standing expertise and passion for music. These special models are the result of decades of research and development, evident in every detail.

In collaboration with renowned artists, unique turntables are created that perfectly combine art and technology. These collaborations not only produce exceptional designs but also deliver unparalleled sound quality.

To give our products a special exclusivity, we use materials that are only available in limited quantities. These rare and high-quality materials guarantee unmatched sound fidelity and aesthetic excellence.

For music as we love it: electrifying, liberating, alive – as if sitting in the best seat at a live concert. Our Limited Edition products offer a listening experience so realistic that it captivates the senses and brings the music to life.



Veronika Suchy

Robert Suchy

no limits



Reference Jubilee Anniversary turntable 40 years

The new Reference Jubilee turntable marries the best of Clearaudio's 40 years of excellence to usher in a new era of analogue precision. It delivers synchronized rotational speed, astonishingly low levels of both resonance and friction, and a breathtaking moment of torque.



Reference Jubilee
with TT3 tonearm

Reference Jubilee

The 6cm-thick main platter is constructed from highly damped polyoxymethylene (POM) and, as you might expect with any Clearaudio turntable, the platter rotates on a special variation of our own patented ceramic magnetic bearing (CMB). The motor housing is elaborately decoupled from the chassis by an innovative network of 18 rubber 'tightropes' ("IMS").

While Clearaudio has earned a considerable reputation for innovation in all things analogue, here the design team has expertly married digital and analogue technology to achieve a new level of precision and consistency of rotational speed. A 12-bit DAC (Digital-Analog-Converter) generates the drive motor's voltage; the DAC has exceptionally high resolution and zero fluctuations or 'drift' in response to either time or temperature. What's more, it has been cleverly designed to work in tandem with Clearaudio's optical speed control system.

Every three seconds, an optical sensor takes a reading of the 8.5kg stainless steel sub-platter's rotational speed, and delivers that reading to a control unit. The control unit then immediately regulates the slightest deviations by adjusting the motor's voltage via an operational amplifier. The Reference Jubilee's brand new air-core (non-magnetic) 24-volt DC motor runs unbelievably quietly, ensuring that the listener remains blissfully unaware of the whole process.

The Professional Power 24V linear power supply is already included.



Reference Jubilee
with TT3 tonearm

limited
250
edition



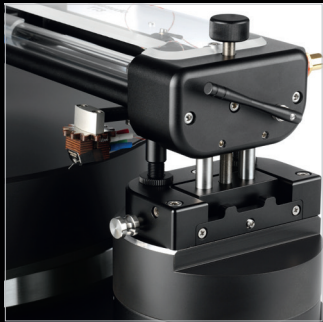
Reference Jubilee speed change



Limited Edition - Only 250 units



Elaborate suspension design of
the motor (IMS - Innovative Motor
Suspension)



Detail TT3



Professional Power 24V



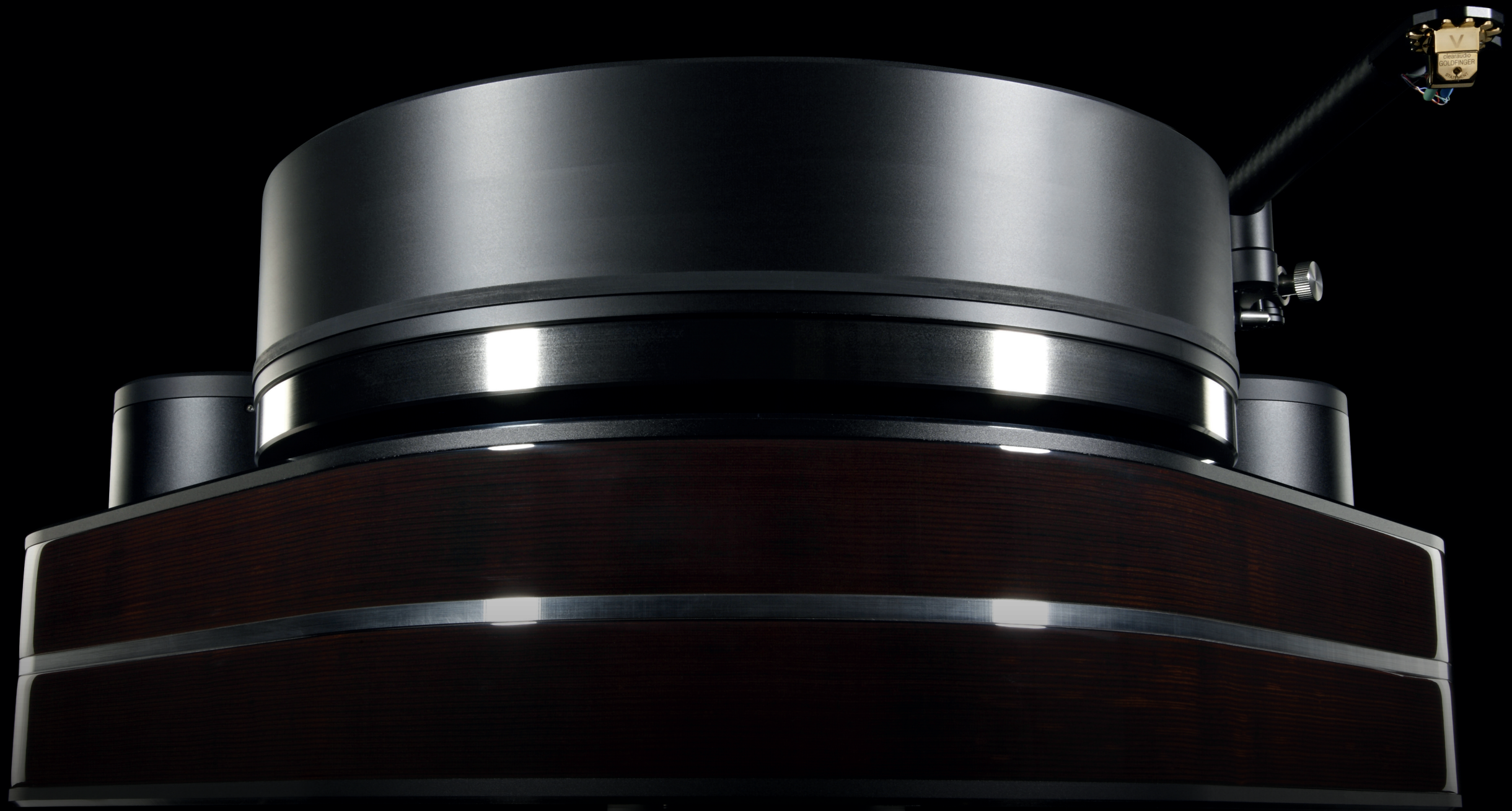
Reference Jubilee
with TT3 tonearm

Master Jubilee Anniversary turntable 45 years

Just in time for its 45th anniversary, clearaudio takes the Reference Jubilee turntable to a new level by doubling the size of the turntable chassis.

Turntable: Master Jubilee
Tonearm: Unity
Cartridge: Goldfinger V2.1

[limited
45
edition]



Master Jubilee

The new raised design, as well as the outsourced motor unit, now provide the possibility of mounting a second tonearm. The outsourced 48V motor throttled to 24V, which is already decoupled from the chassis by 18 O-rings („IMS”) using the existing suspension, ensures even better resonance control. The additional mass turntable underneath the actual platter gives this heavy-duty turntable dreamlike rotational values and a weight of at least 30 kilograms. Thanks to the same motor control with self-calibrating technology and spring mounted

drive design as used with its younger brother, the Master Jubilee sets a new standard in terms of measurements, in part with improved measurement methods, beyond imagination.

The results of the wow and flutter measurements are likely unmatched by any other turntable manufacturer. The Professional Power 24V power supply is also included with the Master Jubilee.



Turntable: Master Jubilee with tonearm Unify black, with Goldfinger V2.1 cartridge and Professional Power 24V power supply.

[limited
45
edition]



Reference Jubilee speed change

Tonearm Unify, black with Goldfinger V2.1 cartridge

Elaborate suspension design of the motor (IMS - Innovative Motor Suspension)

Limited Edition - Only 45 units



Master Jubilee with tonearm Unify

Celebrity Series – Al Di Meola Edition

With the new Celebrity Series, Clearaudio honors great artists. This edition is dedicated to the multi-award-winning, US-American jazz guitarist Al Di Meola.



Turntable:
Al Di Meola Edition, wood

limited
1000
edition

Celebrity

Al Di Meola

The base unit consists of a high-density fiberboard and is shaped like an electric guitar. It was created in close collaboration with Al Di Meola. Inside the turntable, you'll find state-of-the-art Clearaudio technology. The platter is driven by a flat belt that passes through the new Tacho-Speed-Control (TSC) system. TSC continuously monitors the platters speed in real-time, allowing immediate adjustments to changing factors such as belt tension or temperature fluctuations. Additionally, TSC performs an automatic speed calibration during each startup. The motor suspension, using multiple O-rings (referred to as IMS-Innovative Motor Suspension), prevents unnecessary vibrations and motor-to-chassis transfers. This design was adapted from the Clearaudio Reference Jubilee turntable. The new control technology with integrated auto-calibration and additional settings is also applied here.

The unique design of the Celebrity turntable combines functionality with aesthetics. The volume control knob, resembling an electric guitar's knob, serves as a multifunctional dial with touch functionality. With a simple press, you can start the turntable, switch between speeds (33 1/3 and 45 RPM) and put it into standby mode. The outer appearance of the Celebrity turntable is completed by a special version of the Profiler tonearm and a new MM cartridge, also named Celebrity. The Celebrity turntable is available exclusively in black or wood design. Overall, this package is limited to 1,000 units and includes a specially numbered collector's edition vinyl album by the artist and a guitar plectrum.

A true work of art, created by Al Di Meola, Impex Records, and Clearaudio.



Turntable:
Al Di Meola Edition, black

limited
1000
edition



Detail of engine suspension
and speedometer



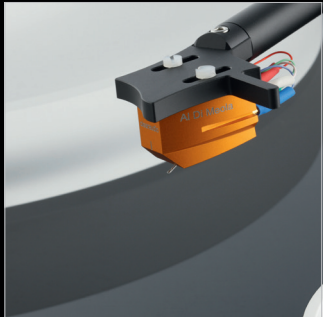
Close-up engraving
Al Di Meola autograph



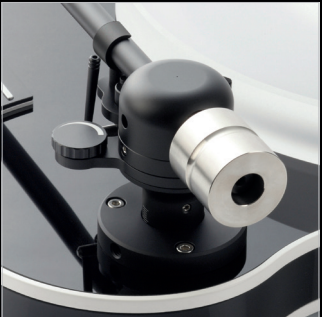
Limited Edition - Only 1000 units



Controller with touch function
for intuitive operation



Clearaudio Celebrity
MM Cartridge



Clearaudio Celebrity tonearm



Al Di Meola Edition, wood
Al Di Meola Edition, black



pure emotion

Diamond Jubilee

Stagnation is regression, which is why our team is always searching for new materials and techniques. Zirconia is one of the hardest materials currently used in the industry. We have found a way to utilize this property to set new standards that affect the resonance stability of material bodies. Thanks to the material properties, the tolerance during production is up to 0.001mm. This accuracy, combined with the new optimized magnet arrangement, which includes the strongest neodymium magnets as well

as coils, sets a new standard in unparalleled dynamics and resolution. With the Diamond Jubilee MC, we have succeeded in combining one of the hardest materials in the world with the finest selection of other components such as magnets and coils. In addition, a new needle construction design has been added to set a new standard.



Cartridge
Diamond Jubilee





Diamond Jubilee,
scope of delivery



ready for LIVE


Technical Specifications

 <div>limited 250 edition</div>	
Model:	Reference Jubilee
Construction details:	<ul style="list-style-type: none">- Resonance-optimised chassis shape- Made of laminated wood and aluminium- All turntable feet are fine adjustable- Optical Speed Control (OSC)- IMS – Innovative Motor Suspension (Suspension design of the motor using 18 O-rings)
Speed options:	33 1/3, 45, 78rpm
Drive unit:	<ul style="list-style-type: none">- High torque 24V DC motor with belt drive- Fully automatic self-calibration of the speed by a push of a button- Hybrid engine control: A high resolution 12 bit digital-to-analog converter (DAC) generates a motor reference voltage, which is fed into the purely analog motor control. Automatic compensation of friction and temperature changes on the platter bearings and belts. The speed remains in the perfect range at all times.
Bearing:	Inverted bearing in lower drive platter, sintered bronze bushing, incl. Clearaudio CMB ceramic magnetic bearing in main platter
Platter:	50mm / 1.97 inch main platter, made out of synthetic material with high-density and excellent dimension. // 15mm / 0.59 inch stability, precision CNC machined surface, solid stainless steel sub-platter, dynamically balanced
Speed accuracy (measured):	± 0.05%
Power consumption:	Max. consumption: 5.0 watts Consumption in operation: 2.1 watts Off mode: 1.8 watts
Total weight:	approx. 22kg (without tonearm and power supply)
Dimensions (W/D/H):	Approx. 495 x 343 x 180mm (with tonarm base, without tonearm)
Dimensions (W/D/H):	Approx. 19.49 x 13.50 x 7.09 inches (with tonarm base, without tonearm)
Manufacturer warranty:	5 years*

 <div>limited 45 edition</div>	
Model:	Master Jubilee
Construction details:	<ul style="list-style-type: none">- Resonance-optimised chassis shape- Made of laminated wood and aluminium- Optical Speed Control (OSC)- IMS – Innovative Motor Suspension (Suspension design of the motor using 18 O-rings)
Speed options:	33 1/3, 45, 78rpm
Drive unit:	<ul style="list-style-type: none">- High torque 24V DC motor with belt drive- Fully automatic self-calibration of the speed by a push of a button- Hybrid engine control: A high resolution 12 bit digital-to-analog converter (DAC) generates a motor reference voltage, which is fed into the purely analog motor control. Automatic compensation of friction and temperature changes on the platter bearings and belts. The speed remains in the perfect range at all times.
Bearing:	Inverted bearing in lower drive platter, sintered bronze bushing, incl. Clearaudio CMB ceramic magnetic bearing in main platter
Platter:	70mm / 2.76 inch main platter, made out of synthetic material with high-density and excellent dimension 15mm / 0.59 inch stability, precision CNC machined surface, solid stainless steel sub-platter, dynamically balanced
Speed accuracy (measured):	± 0.05%
Power consumption:	Max. consumption: 8.64 watts Consumption in operation: 2.4 watts Off mode: 1.4 watts
Total weight:	Approx. 33kg (without tonearm and power supply); Motor unit approx. 4.6kg
Dimensions (W/D/H):	Approx. 495 x 426.5 x 242.55mm (with tonearm base, without tonearm)
Dimensions (W/D/H):	Approx. 19.49 x 16.79 x 9.55 inches (with tonearm base, without tonearm)
Manufacturer warranty:	5 years*

*Provided the warranty card is fully completed and returned to Clearaudio or registered online within 2 weeks of purchase.
More information about the power consumption of our products on www.clearaudio.de

Technical Specifications

 <div>limited 1000 edition</div>	
Model:	Celebrity Series – Al Di Meola Edition
Construction details:	<ul style="list-style-type: none">- Resonance-optimised turntable- Turntable chassis made of medium-density wood fibre with special plastic veneer (black) or plane veneer (wood).- Bottom plate made of machining steel- Height-adjustable turntable feet
Speed options:	33 1/3, 45rpm
Drive unit:	<ul style="list-style-type: none">- Decoupled and resonance damped 12V DC motor- Flat belt-drive- Plug-in power supply unit, designed for worldwide use with all networks and power frequencies.- „IMS light – Innovative Motor Suspension“ (Suspension design of the motor using O-rings)- „TSC“ Tacho Speed Control (speed monitoring) Automatic compensation of friction and temperature changes on platter bearings and belts
Bearing:	Polished and tempered steel spindle in a sintered bronze bushing, running on a teflon thrust-pad
Platter:	30mm / 1.18 inch main platter, made out of synthetic material with high-density and excellent dimension / precision CNC machined aluminium sub-platter
Speed accuracy (measured):	± 0.05%
Power consumption:	Max. consumption: 2.75 watts Consumption in operation: 1.04 watts Standby: 0.5 watts Off mode: 0.0 watts (switched off at the rear)
Total weight:	Approx. 10kg (incl. tonearm and cartridge)
Dimensions (W/D/H):	Approx. 460 x 360 x 140mm (with tonearm)
Dimensions (W/D/H):	Approx. 18.11 x 14.17 x 5.51 inches (with tonearm)
Manufacturer warranty:	2 years*

 <div>limited 45 edition</div>	
Model:	Diamond Jubilee
Total mass:	~ 9.25g (± 2g)
Frequency response:	20Hz - 20kHz
Output voltage (at 5cm/sec):	0.6 - 0.65mV
Channel separation:	> 35dB
Channel balance:	< 0.15dB
Tracking ability:	≤ 100µm
Recommended tracking force:	2.8g (± 0.2g)
Cartridge impedance:	50Ω
Cantilever / stylus shape:	Boron / Clearaudio Prime Line PLUS
Compliance:	18µ/mN
Coil assembly:	Absolutely symmetrical design
Coil material:	24 carat gold
Cartridge body:	Zirconium Oxide
Manufacturer's warranty:	2 years*

*Provided the warranty card is fully completed and returned to Clearaudio or registered online within 2 weeks of purchase.
More information about the power consumption of our products on www.clearaudio.de

Find out more about Clearaudio products

Please see our English language website at:
www.clearaudio.de for full details of all Clearaudio products or you can contact your
local Clearaudio distributor or dealer
(listings of international distributors/dealers are given on our website.

Acknowledgements

Concept, artwork and production by:
AUFSESS Kommunikation GmbH, Germany, www.aufsess.com

Photo credits:

- Cover, Radek Grzybowski, unsplash
- 3, 15: Thomas Riese
- 4/5: Arindam Mahanta, unsplash
- 18/19, Back cover: Lucja Romanowska
- Product photos: Christian Schleupner

Disclaimer

Technical specifications are subject to change or improvement without prior notice.

Clearaudio accepts no liability for any misprints.

Product availability as long as stock lasts.

© Clearaudio Electronic GmbH 2025

Use of any of the text or images contained in this brochure requires written
confirmation from Clearaudio Electronic GmbH.

Protective charge: EUR 15,-



Loving music

Limited
[EDITION]

Clearaudio electronic GmbH 2025

Spardorfer Str. 150 | D-91054 Erlangen | Fon: +49.9131.40 300 100 | Fax: +49.9131.40 300 119 | info@clearaudio.de
Made in Germany www.analogshop.de; www.clearaudio.de

#250309-E
aufsess.com